

ALARM CONTROL UNIT (ACU) FOR PSF AND PSM SERIES



Overview

Alarm Control Unit (ACU) is a microprocessor-based controller designed to collect, manage, and distribute alarm and status information from perimeter security sensors and related devices. It supports up to 16 alarm input circuits and 16 fully programmable alarm outputs, providing flexible configuration for various site requirements.

The ACU performs real-time alarm processing, event prioritization, and output activation to ensure fast and reliable response to intrusion or fault conditions. It communicates with the PSF and PSM perimeter security management software via RS-485 and/or TCP/IP, enabling seamless integration into centralized security systems. The unit also supports system health monitoring, alarm logging, and remote configuration, making it suitable for both standalone and networked perimeter security installations.

Key Features

➤ Architecture

ACUs can be installed at multiple locations on the site perimeter and connect to PSF and PSM perimeter security management software in control room via RS-485 and/or TCP/IP.

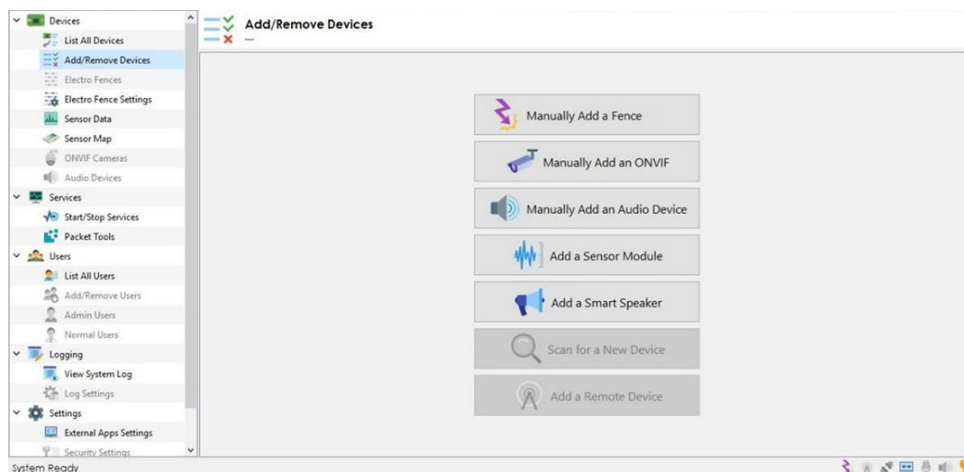
➤ Inputs/Outputs

Inputs can be used individually or linked together to create an alarm network with up to 2,032 alarm input points. Supervised inputs are available for N.C. (normally closed) alarm contacts.

Programmable outputs can be used to drive an alarm buzzer, audio switching, bell or relay to control low voltage or display devices

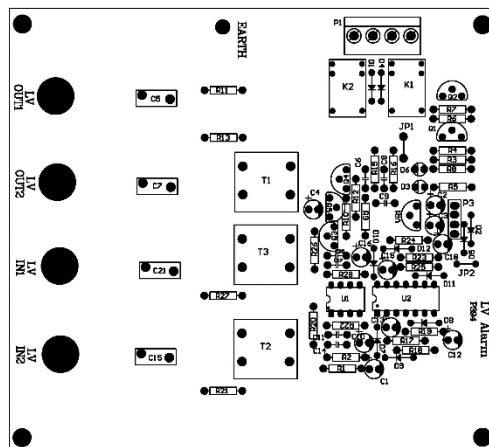
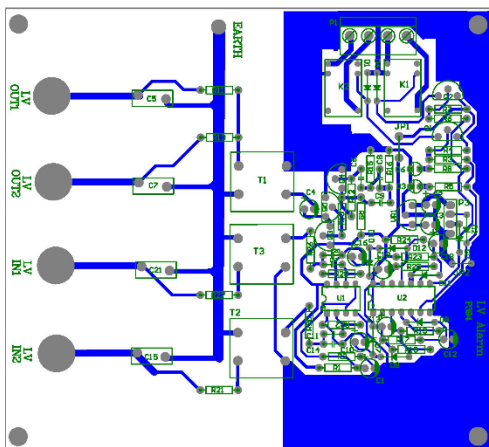
➤ Software integration

All input and output are monitored and controlled via PSF or PSM perimeter security management software. The software provides full alarm reporting, sensor status monitoring, and programmable output control functions.



Product Design Specifications

- 8 or 16 alarm inputs for NC (Normally Closed) alarm contacts
- 8 or 16 programmable alarm outputs (buzzer, relays, indicators, etc.)
- Integrated TCP/IP and RS-485 communications to PSF and PSM perimeter security management software
- LED communication-status indication on the front panel
- Input surge protection for enhanced reliability
- Local rechargeable battery backup for power failure resilience



Technical Data

➤ Communications

- Ports: 1 × RS-485, 1 × TCP/IP
- Protocols: RS-485, TCP/IP

➤ Inputs / Outputs

- Alarm inputs: 8 or 16
- Alarm outputs: 8 or 16, fully programmable

➤ Electrical

- Input voltage: 230 VAC
- Power consumption: approx. 10 W
- Battery backup: rechargeable (internal – capacity as per project design)

➤ Mechanical

- Height: 400 mm, Width: 300 mm, Depth: 150 mm



Address: 151 Yonge Street, Suite 1500
Toronto, ON M5C 2W7
Canada

Tel: +1-416 371 2275

Website: www.persec.co

LinkedIn: www.linkedin.com/company/persec-technologies